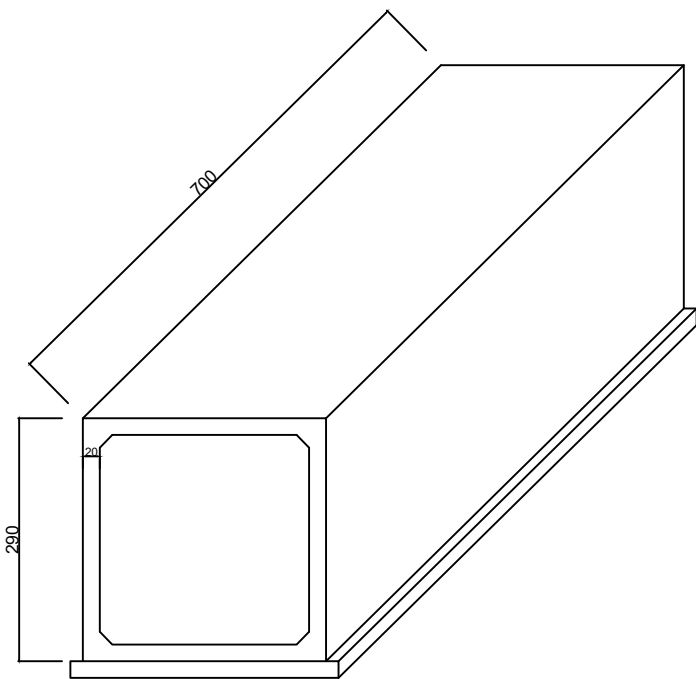
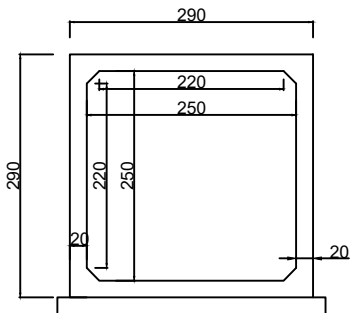


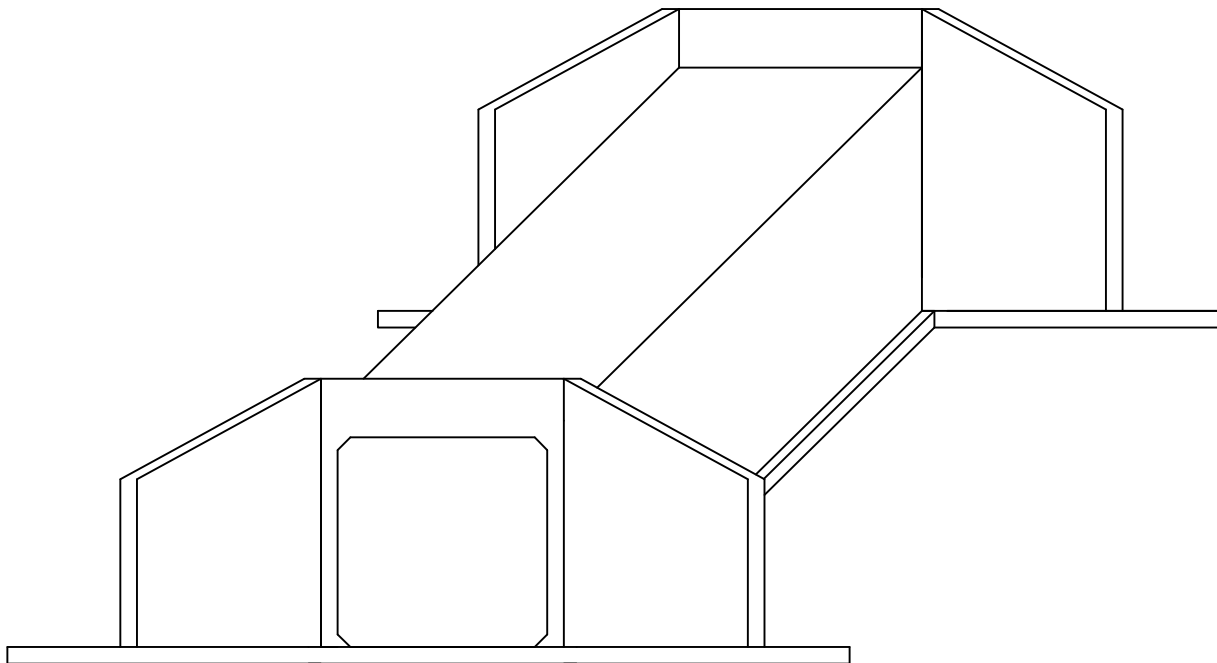
DETALHE
ADUELA



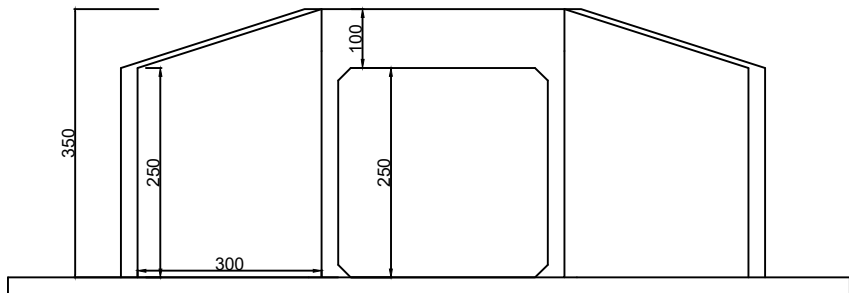
DETALHE
ADUELA



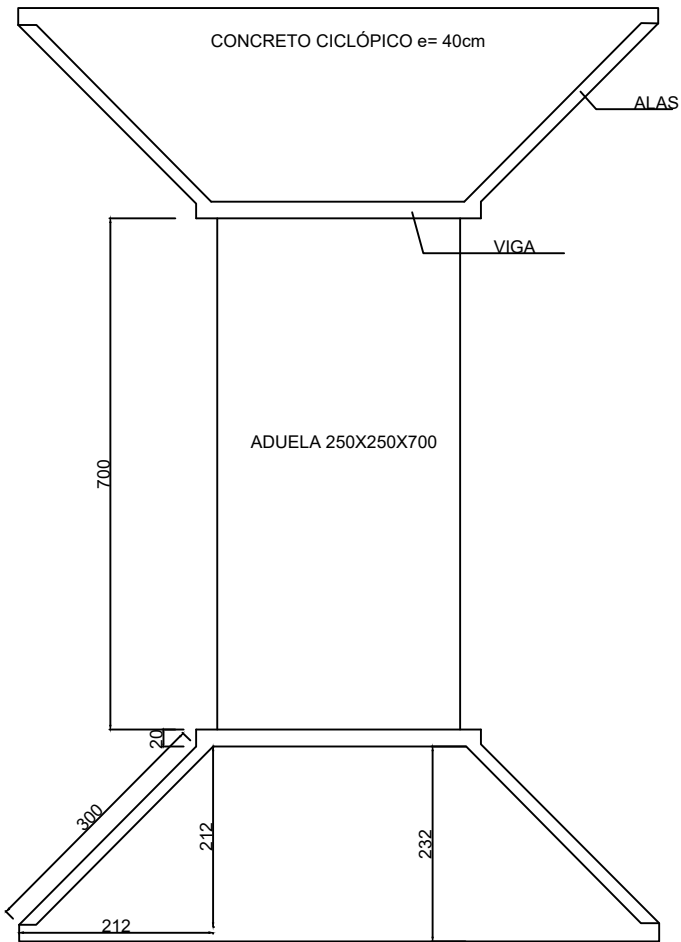
DETALHE



DETALHE
"CABECEIRA"



PLANTA



PREFEITURA DE CHAPADA DOS GUIMARÃES

SECRETARIA MUNICIPAL DE INFRAESTRUTURA

ASSUNTO: BUEIRO SIMPLES CELULAR DE CONCRETO
250X250 cm

OBRA: SUBSTITUIÇÃO DE PONTE POR ADUELAS

LOCAL: CÓRREGO VIRA SAIA

AUTOR DO PROJETO: _____
ENG. DAYNA APARECIDA DA SILVA - CREA - MT 49.331

COORDENADAS:
15° 6'43.69"S 55°44'43.24"W

DATA: AGOSTO/2021

ESCALA: S/E

DIMENSÕES: 250X250X700 cm

VISTO:

FOLHA:

DESCRIÇÃO:
LAYOUT

03/04